

- ### KEY NOTES
- 4"x4"x4'D UNDERGROUND CONCRETE POWER PULLBOX.
 - 2-1/2"x4"x4'D UNDERGROUND CONCRETE POWER PULLBOX.
 - 2-1/2"x4"x4'D UNDERGROUND CONCRETE SIGNAL PULLBOX.
 - 24"x24"x6'D WP PULLBOX (DATA/SIGNAL/CCTV/FIRE ALARM) WITH BARRIER FOR FIRE ALARM.
 - 24"x24"x6'D WP PULLBOX (POWER).
 - 24"x24"x6'D WP PULLBOX.
 - EXTEND CONCRETE PAD TO FIT NEW MAIN SWITCHBOARD "MS". REFER TO DETAIL 2/E1.3.
 - 3" C. (2)30(DATA), 2" C. (3)30(CCTV), 2" C. (1)30(FW + 4)12(FIRE ALARM); (2)1" C. (1)C (CLOCK), 3" C.D. (SPARE SIGNAL) STUB-UP NEAR BUILDING WALL.
 - (2)3" C. 3/8500MCM & 1/2" C. (DISTRIBUTION PANELS DBA & DBB FEEDERS) AND 1" C. (2)3" C. 3/8500MCM & 1/2" C. (DISTRIBUTION PANELS DBA & DBB FEEDERS); 1" C. (2)3" C. (DATA), 2" C. (3)30(CCTV); 2" C. (1)30(FW + 4)12(FIRE ALARM); 1" C. (1)C (CLOCK); (2)3" C. (SPARE SIGNAL).
 - 3" C. 3/8500MCM & 1/2" C. (DISTRIBUTION PANEL DBA FEEDERS); 2" C. (1)30(FW + 4)12(FIRE ALARM); 1" C. (1)C (CLOCK); (2)3" C. (DATA), 2" C. (3)30(CCTV); 2" C. (1)30(FW + 4)12(FIRE ALARM); 1" C. (1)C (CLOCK); (2)3" C. (SPARE SIGNAL) STUB-UP NEAR BUILDING WALL.
 - 2" C. (1)30(FW + 4)12(FIRE ALARM); 1" C. (1)C (CLOCK).
 - 3" C. 3/8500 MCM & 1/2" C.
 - (3)30(CCTV), REFER TO E6.2 FOR CONTINUATION.
 - 3" C. 3/8500 MCM & 1/2" C. (DISTRIBUTION PANEL DBB FEEDER); 2" C. (1)30(FW + 4)12(FIRE ALARM); 1" C. (1)C (CLOCK); (2)3" C. (DATA), 2" C. (3)30(CCTV); 2" C. (1)30(FW + 4)12(FIRE ALARM); 1" C. (1)C (CLOCK); (2)3" C. (SPARE SIGNAL) STUB-UP SPARE CONDUIT NEAR WALL.
 - REPLACE (E) CANOPY LIGHTING FIXTURES WITH TYPE B FIXTURES. RE-USE (E) WIRES. PATCH/REPAIR AND REPAINT AFFECTED CEILING.
 - TO NEW PANEL "D1" 2" C. 4/1" & 1/4" C. SEE ENLARGED RECONSTRUCTION PLAN.
 - WP DRY TYPE TRANSFORMER 45 KVA, 480V-120/208V, 3Ø, 4W, FOR ANCHORAGE REFER TO DETAILS 10/E1.2 AND 1/E1.3.
 - 1" C. (1)FW + 4/12(FIRE ALARM).
 - (2)12"x12"x6'D WP PULLBOX.
 - 2" C. (2)AW & (1)BW (PA); 1" C. (1)C (CLOCK).

EXCAVATION NOTES

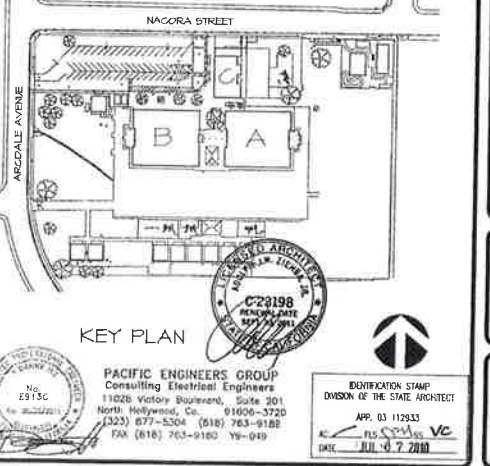
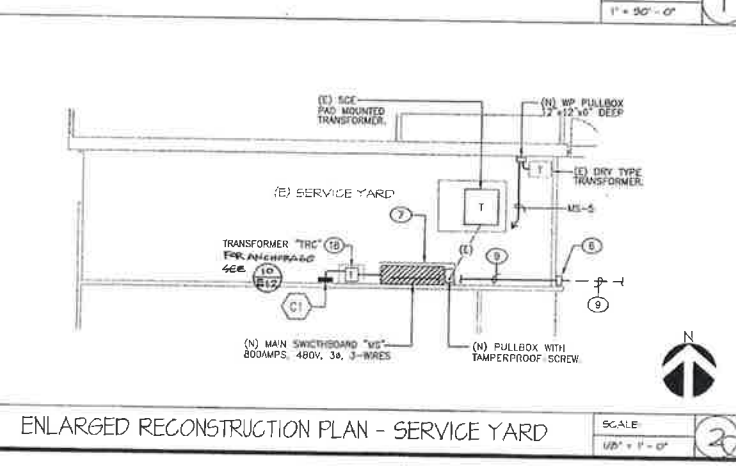
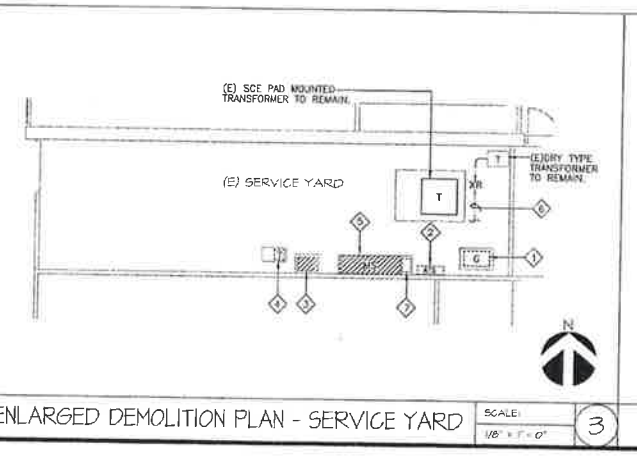
CONTRACTOR SHALL OBTAIN FROM THE DISTRICT A SET OF RECORD DRAWINGS AND USE THEM AS A GUIDE FOR LOCATING EXISTING UNDERGROUND LINES (ELECTRICAL CONDUITS, SEWER LINES, WATER LINES, PLUMBING, ETC.). CONTRACTOR SHALL BE RESPONSIBLE FOR COORDINATION AND ROUTING OF NEW TRENCHING IN AREAS OF EXISTING UNDERGROUND LINES. CONTRACTOR SHALL VERIFY EXACT LOCATIONS OF ALL EXISTING LINES BEFORE NEW TRENCHING OCCURS BY USING ELECTRONIC LOCATING DEVICES, DIG ALERT SERVICES, ETC. CONTRACTOR TO PREPARE A WRITTEN SCALED PLAN SHOWING ALL LOCATIONS OF EXISTING UTILITIES. CONTRACTOR SHALL INCLUDE THE COST OF LOCATING THE EXISTING UNDERGROUND LINES IN THE BID. CONTRACTOR SHALL BE RESPONSIBLE FOR REPAIRING ANY AND ALL DAMAGE TO EXISTING LINES.

TRENCHING FOR NEW UNDERGROUND CONDUITS IN AREAS WHERE EXISTING UNDERGROUND LINES ARE PRESENT SHALL BE EXCAVATED BY HAND AND WITH EXTREME CAUTION. UNDERGROUND POWER AND SIGNAL PULLBOXES WHERE SHOWN ON THE SITE PLAN DETERMINED TO BE IN CONFLICT WITH EXISTING UNDERGROUND LINES AFTER EXCAVATION BY HAND SHALL BE RELOCATED TO A POSITION AS CLOSE AS POSSIBLE TO THE LOCATION SHOWN ON THE DRAWINGS. CONTRACTOR TO PREPARE A WRITTEN SCALED PLAN SHOWING ALL LOCATIONS OF EXISTING UTILITIES.

LOCATE UNDERGROUND CONDUITS ON THE SAME TRENCH AS PLUMBING AND SANITARY LINES. MINIMUM HORIZONTAL OR VERTICAL DISTANCE FROM ELECTRICAL CONDUIT TO EXISTING OR NEW WATER PIPE SHALL BE 12". WHEN CROSSING EXISTING OR NEW WATER PIPE, ELECTRICAL CONDUITS SHALL BE ROUTED ABOVE THE WATER PIPE.

- ### SHEET NOTES
- ALL (E) SITE CONDUITS, PULLBOXES AND WIRES NOT SHOWN ON THIS DRAWING SHALL REMAIN U.O.N.
 - FOR NEW PULLBOX DETAILS, SEE 2/E1.2 & 2/E1.3.
 - TRENCHING FOR NEW CONDUIT DUCT BANK DETAILS, SEE 2/E1.2.

- ### DEMOLITION KEY NOTES
- DISCONNECT AND REMOVE EXISTING EMERGENCY GENERATOR INCLUDING CONCRETE PAD, ASSOCIATED WIRES AND CONDUIT. CUT AND CAP CONCEALED CONDUIT.
 - DISCONNECT AND REMOVE EXISTING AUTOMATIC TRANSFER SWITCH INCLUDING ASSOCIATED WIRES AND CONDUIT. CUT AND CAP CONCEALED CONDUIT.
 - DISCONNECT AND REMOVE EXISTING DISTRIBUTION SWITCH BOARD INCLUDING ASSOCIATED WIRES AND CONDUIT. CUT AND CAP CONCEALED CONDUIT.
 - DISCONNECT AND REMOVE EXISTING DRY TYPE TRANSFORMER INCLUDING CONCRETE PAD AND ASSOCIATED WIRES AND CONDUIT.
 - REMOVE AND REPLACE EXISTING MAIN SWITCHBOARD, INTERCEPT AND EXTEND MAIN FEEDER AND #2 UNIT #8 FEEDER TO NEW MAIN SWITCHBOARD "MS". CUT AND CAP CONCEALED CONDUIT AND UNUSED SECONDARY FEEDER.
 - REMOVE AND REPLACE EXISTING EXPOSED CONDUIT AND WIRES.
 - REMOVE AND REPLACE EXISTING PULLBOX.



DESIGNED BY: AD	CHECKED BY: AD	DATE:
DRAWN BY: HY	REVISION:	
ADOLPH ZEMBA, AIA & ASSOCIATES, INC. 60 S. GONDARA BLVD., SUITE 400 BURLINGAME, CA 94010 TEL: 916.261.2881 FAX: 916.261.7192 Email: adz@adolphzembra.com		
ROSLAND UNIFIED SCHOOL DISTRICT 1830 NOGALES STREET ROSLAND HEIGHTS, CA 91148		
SHELYN ELEMENTARY SCHOOL 14500 E. NACORA ST. ROSLAND HEIGHTS, CA 91148		
DATE: 5-03-04 JOB NO.: 080212 SHEET NO.: E2.1		

CONTRACTOR SHALL OBTAIN FROM THE DISTRICT A SET OF RECORD DRAWINGS AND USE THEM AS A GUIDE FOR LOCATING EXISTING UNDERGROUND LINES (ELECTRICAL CONDUITS, SEWER LINES, WATER LINES, PLUMBING, ETC.). CONTRACTOR SHALL BE RESPONSIBLE FOR COORDINATION AND ROUTING OF NEW TRENCHING IN AREAS OF EXISTING UNDERGROUND LINES. CONTRACTOR SHALL VERIFY EXACT LOCATIONS OF ALL EXISTING LINES BEFORE NEW TRENCHING OCCURS BY USING ELECTRONIC LOCATING DEVICES, DIG ALERT SERVICES, ETC. CONTRACTOR TO PREPARE A WRITTEN SCALED PLAN SHOWING ALL LOCATIONS OF EXISTING UTILITIES. CONTRACTOR SHALL INCLUDE THE COST OF LOCATING THE EXISTING UNDERGROUND LINES IN THE BID. CONTRACTOR SHALL BE RESPONSIBLE FOR REPAIRING ANY AND ALL DAMAGE TO EXISTING LINES.

TRENCHING FOR NEW UNDERGROUND CONDUITS IN AREAS WHERE EXISTING UNDERGROUND LINES ARE PRESENT SHALL BE EXCAVATED BY HAND AND WITH EXTREME CAUTION. UNDERGROUND POWER AND SIGNAL PULLBOXES WHERE SHOWN ON THE SITE PLAN DETERMINED TO BE IN CONFLICT WITH EXISTING UNDERGROUND LINES AFTER EXCAVATION BY HAND SHALL BE RELOCATED TO A POSITION AS CLOSE AS POSSIBLE TO THE LOCATION SHOWN ON THE DRAWINGS. CONTRACTOR TO PREPARE A WRITTEN SCALED PLAN SHOWING ALL LOCATIONS OF EXISTING UTILITIES.

LOCATE UNDERGROUND CONDUITS ON THE SAME TRENCH AS PLUMBING AND SANITARY LINES. MINIMUM HORIZONTAL OR VERTICAL DISTANCE FROM ELECTRICAL CONDUIT TO EXISTING OR NEW WATER PIPE SHALL BE 12". WHEN CROSSING EXISTING OR NEW WATER PIPE, ELECTRICAL CONDUITS SHALL BE ROUTED ABOVE THE WATER PIPE.

CONTRACTOR SHALL OBTAIN FROM THE DISTRICT A SET OF RECORD DRAWINGS AND USE THEM AS A GUIDE FOR LOCATING EXISTING UNDERGROUND LINES (ELECTRICAL CONDUITS, SEWER LINES, WATER LINES, PLUMBING, ETC.). CONTRACTOR SHALL BE RESPONSIBLE FOR COORDINATION AND ROUTING OF NEW TRENCHING IN AREAS OF EXISTING UNDERGROUND LINES. CONTRACTOR SHALL VERIFY EXACT LOCATIONS OF ALL EXISTING LINES BEFORE NEW TRENCHING OCCURS BY USING ELECTRONIC LOCATING DEVICES, DIG ALERT SERVICES, ETC. CONTRACTOR TO PREPARE A WRITTEN SCALED PLAN SHOWING ALL LOCATIONS OF EXISTING UTILITIES. CONTRACTOR SHALL INCLUDE THE COST OF LOCATING THE EXISTING UNDERGROUND LINES IN THE BID. CONTRACTOR SHALL BE RESPONSIBLE FOR REPAIRING ANY AND ALL DAMAGE TO EXISTING LINES.